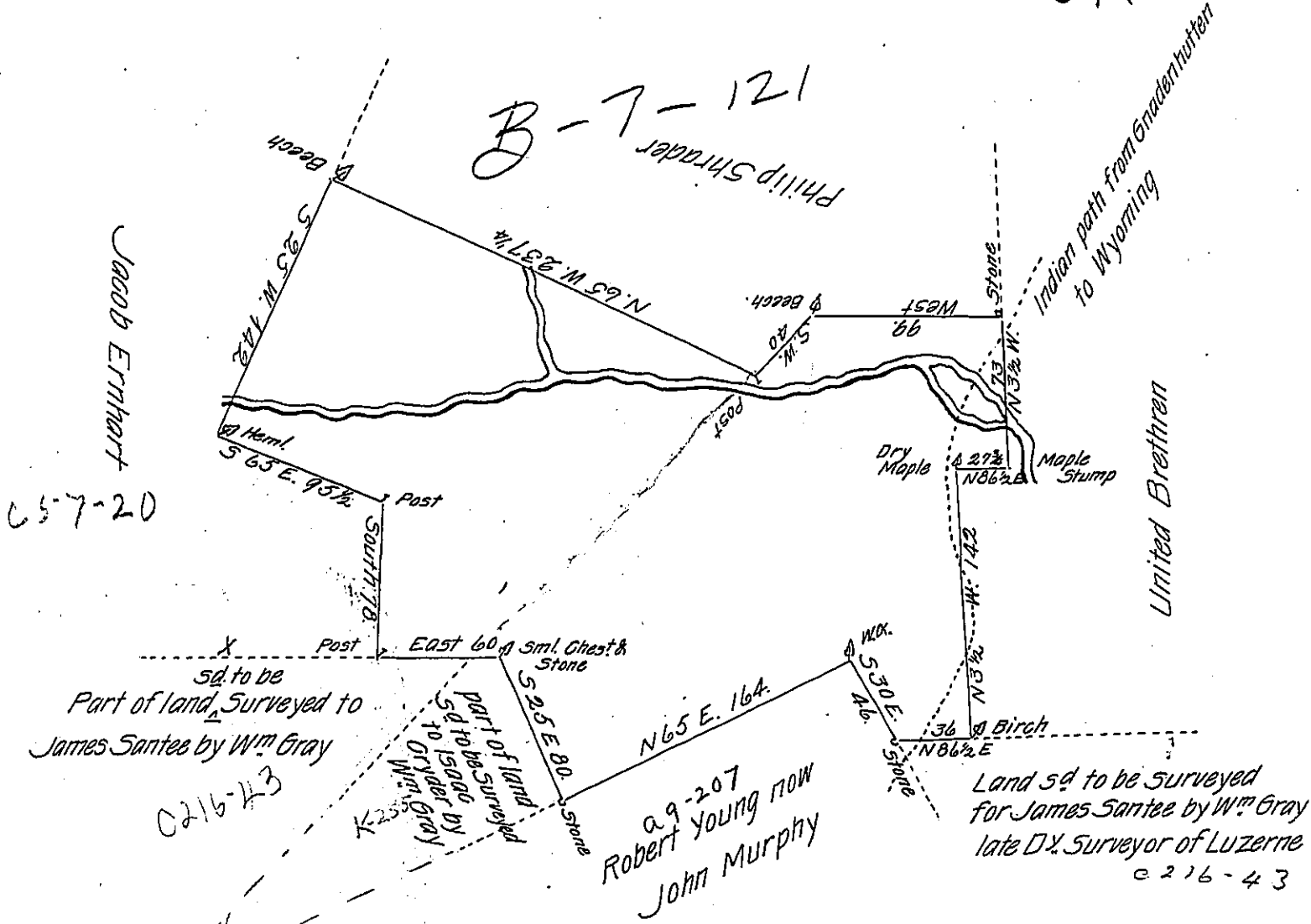


see K-255

B-7-121



By Virtue of a Warrant dated the 13th May 1786 Surveyed the 16th October 1802. to Bartle Hittle the above described tract of Land Situate on Laurel run which empties into Lehi about two miles North of Quaccoe on the old Indian path leading from Gradenthutten to Wyoming in the County of Northampton Containing four hundred and thirty four acres three quarters and the allowance of Six P Cent & 6. Surveyed by Direction of the board of property dated the 2^d April 1798.

Penn Township.

P-600: Palmer D.S.

To Samuel Cochran Esquire }
 Surveyor General.

IN TESTIMONY that the above is a copy of the original remaining on file in the Department of Internal Affairs of Pennsylvania, made conformably to an Act of Assembly approved the 16th day of February, 1833, I have hereunto set my Hand and caused the Seal of said Department to be affixed at Harrisburg, this fifth day of April 1905.

Loac R. Palmer
 Secretary of Internal Affairs.